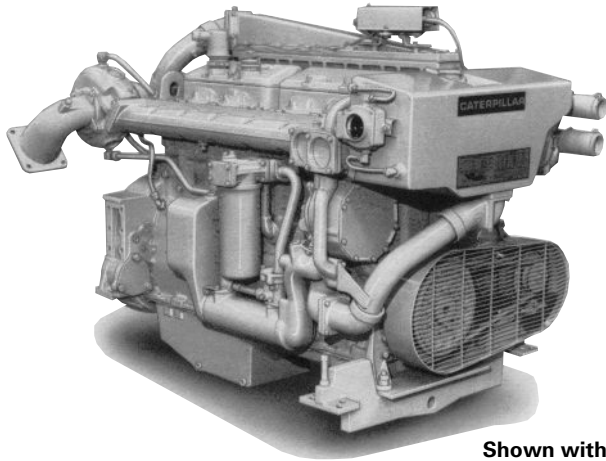




Marine Auxiliary Engine 3406C

345 bkW (462 bhp) 469 mhp @ 1800 rpm



Shown with Accessory Equipment

STANDARD EQUIPMENT

Air Inlet System

Corrosion-resistant aftercooler core, regular duty panel-type air cleaner

Cooling System

Gear driven self-priming auxiliary sea water pump with rotary rubber impeller (heat exchanger engines only), gear driven centrifugal jacket water pump, oil cooler, expansion tank, thermostats and housing

Exhaust System

Watercooled manifold and turbocharger; dry elbow and flange, 152 mm (6 in.)

Flywheel and Flywheel Housing

SAE No. 1 (113 teeth)

Fuel System

LH fuel priming pump, fuel transfer pump, LH fuel filter, flexible fuel lines

Instruments

LH instrument panel with oil pressure, water temperature, and fuel pressure gauges; service meter

Lube System

RH oil level gauge and oil filter, crankcase breather, oil filler in valve cover

Mounting System

Supports

General

Vibration damper, Caterpillar yellow paint, lifting eyes

SPECIFICATIONS

I-6, 4-Stroke-Cycle-Diesel

Emissions IMO compliant
 Displacement 14.6 L (893 cu. in.)
 Bore 137 mm (5.4 in.)
 Stroke 165 mm (6.5 in.)
 Aspiration Turbocharged-Aftercooled
 Governor Hydra-mechanical or PSG
 Engine Weight, Net Dry (approx)
 Heat Exchanger Cooled 1480 kg (3240 lb)
 Keel Cooled 1447 kg (3165 lb)
 Capacity for Liquids
 Cooling System (engine only) 34 L (9 U.S. gal)
 Lube Oil System 34 L (9 U.S. gal)
 Oil Change Interval 250 hr
 Caterpillar DEO 10W30 or 15W40
 Rotation (from flywheel end) Counterclockwise

ACCESSORY EQUIPMENT

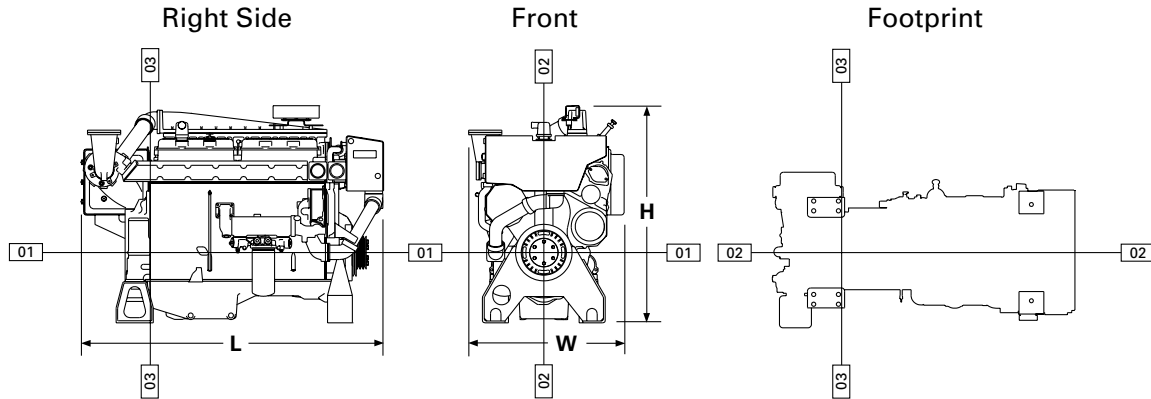
Air Starting Motor
 Alarm Contactor — Oil Pressure, Water Temperature
 24V 35 Amp, 60 Amp Alternator
 Auxiliary Drive Pulley
 Crankshaft Pulley
 Deep Sump Oil Pan
 Digital Tachometer
 Double Wall Fuel Lines and Drain
 Dry Charge Coolant Conditioner
 Duplex Fuel Filter
 12V, 24V, 32V Electric Gauges
 24V Electric Shutoffs — Oil Pressure, Water Temperature, Overspeed
 24V Electric Starting Motor
 Ether Starting Aid
 Exhaust Elbows, Pipe, Flexible Fittings
 Front Stub Shaft
 Generator Installation Arrangement
 24V Governor Control Motor and Switch
 Heat Exchanger
 Hydraulic Pump Drive and Adapter
 4- or 8-Hole Instrument Panel
 Load Sharing or Speed Control Governor
 LH Oil Level Gauge
 Magnetic Pickup
 Mechanical Shutoff — Oil Pressure, Water Temperature
 Mechanical Tachometer Drive
 Primary Fuel Filter/Water Separator
 Solenoid Shutoffs — 24V ETR, ETS
 Spare Parts Kit

PERFORMANCE DATA

Turbocharged-Aftercooled

DM6107-00

345 bkW (.8 pf) 462 bhp			
% load	bkW	Lph	gph
100	345	85.5	22.6
75	255	63.5	16.8
50	170	44.2	11.7
25	87	26.0	6.9



DIMENSIONS*

	mm	in.		mm	in.	
Overall Length	1862.3	73.3				
Length from front to rear face of block	1435.2	56.5				
Length from rear face of block to back of engine	427.1	16.8				
Overall Height	1335.0	52.6				
Height from crankshaft centerline to top of engine	903.2	35.6				
Height from crankshaft centerline to bottom of engine	431.8	17.0				
Overall Width	956.9	37.7				
Width from crankshaft centerline to port side (left side)	494.3	19.5				
Width from crankshaft centerline to starboard side (right side)	462.6	18.2				
			Front	Rear		
			mm	in.	mm	in.
Customer mounting hole diameter	24.0	0.9			25.5	1.0
Width from crankshaft centerline to side	296.0	11.7			257.2	10.1
					317.5	12.5
Length from rear face of block to mounting hole	1167.6	46.0			19.8	0.8
					172.2	6.8

*Illustrations and dimensions from drawing: 5N7058.

RATING CONDITIONS

Engine Performance Parameters

Power.....	±3%
Specific Fuel Consumption	±3%
Fuel Rate	±5%

Fuel rates are based on fuel oil of 35° API [16°C (60°F)] gravity having an LHV of 42 780 kJ/kg (18,390 Btu/lb) when used at 29°C (85°F) and weighing 838.9 g/L (7.001 lb/U.S. gal).

Ratings are based on SAE J1228/ISO8665 standard conditions of 100 kPa (29.61 in. Hg), 25°C (77°F), and 30% relative humidity. These ratings also apply at ISO3046/1, DIN6271/3, and BS5514 conditions of 100 kPa (29.61 in. Hg), 27°C (81°F), and 60% relative humidity.

Additional ratings may be available for specific customer requirements. Consult your Caterpillar representative for additional information.

Performance data is calculated in accordance with tolerances and conditions stated in this specification sheet and is only intended for purposes of comparison with other manufacturers' engines. Actual engine performance may vary according to the particular application of the engine and operating conditions beyond Caterpillar's control.

TMI Reference No.: DM6107-00 (6-15-01)

Materials and specifications are subject to change without notice.

The International System of Units (SI) is used in this publication.