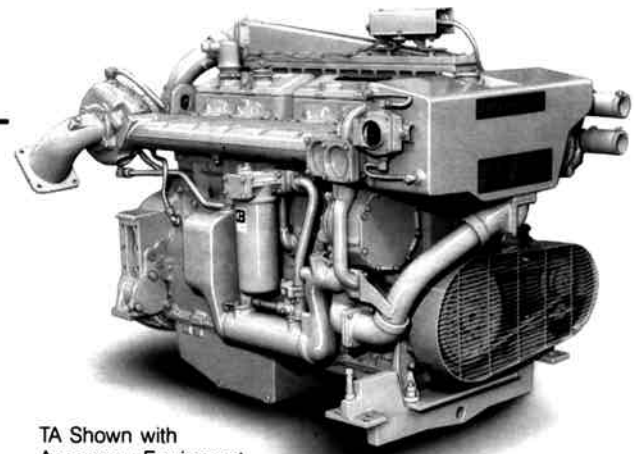


MARINE PROPULSION

SPECIFICATIONS

In-Line 6, 4-Stroke-Cycle-Diesel

Bore — mm (in)	137	(5.4)
Stroke — mm (in)	165	(6.5)
Displacement — L (cu in)	14.6	(893)
Rotation (from flywheel end)		ccw
Compression Ratio	14.5:1	
Capacity for Liquids — L (U.S. gal)		
Cooling System (engine only)	45.4	(12.0)
Lube Oil System (refill)	34.0	(9.0)
Oil Change Interval	250 hrs	
Engine Weight, Net Dry (approx.) — kg (lb)		
Turbocharged (T)	1403	(3090)
Turbocharged-Aftercooled (TA)	1470	(3240)



TA Shown with
Accessory Equipment

PERFORMANCE DATA*

Turbocharged-Aftercooled

Rating Level	C	B	B	A
Rated rpm	2100	1800	1800	1800
Engine Power @ rpm	300 kW (402 hp) 408 PS	272 kW (365 hp) 370 PS	261 kW (350 hp) 355 PS	240 kW (322 hp) 327 PS

rpm	2100	1800	1400	1800	1600	1200	1800	1600	1200	1800	1600	1200
kW	300	279	230	272	255	205	261	245	197	240	229	183
g/kW-hr	219	214	220	211	209	213	212	210	213	214	207	213
L/hr	78.2	71.2	60.4	68.5	63.7	52.0	66.0	61.2	50.0	61.3	56.5	46.4

bhp	402	375	308	365	342	275	350	329	265	322	307	245
lb/hp-hr	.360	.352	.362	.348	.344	.350	.349	.345	.350	.352	.341	.350
gal/hr	20.7	18.8	16.0	18.1	16.8	13.7	17.4	16.2	13.2	16.2	14.9	12.3

Turbocharged

Rating Level	C	B	A
Rated rpm	2100	1800	1800
Engine Power @ rpm	260 kW (348 hp) 353 PS	224 kW (300 hp) 305 PS	187 kW (250 hp) 254 PS

rpm	2100	1800	1400	1800	1600	1200	1800	1600	1200
kW	260	246	206	224	207	168	187	173	141
gal/kW-hr	221	211	212	212	211	215	214	213	217
L/hr	68.2	61.8	52.0	56.5	52.3	42.9	47.6	44.1	36.4

bhp	348	330	276	300	278	225	250	232	189
lb/hp-hr	.363	.347	.349	.348	.348	.353	.352	.351	.356
gal/hr	18.0	16.3	13.7	14.9	13.8	11.3	12.6	11.7	.96

*Represents performance along a typical fixed pitch propeller curve.

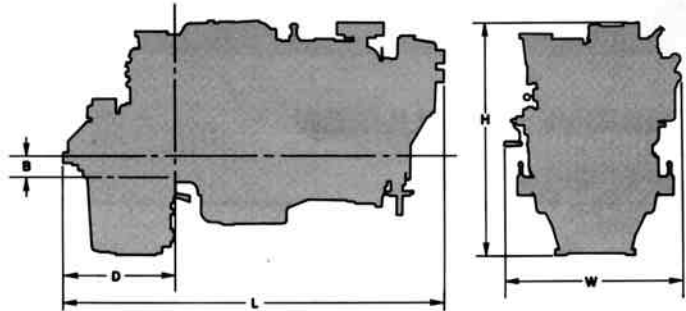
RATING LEVEL DEFINITIONS (Continuous Power)

- C** — For use in yachts with displacement hulls, as well as ferries with trips less than one hour, fish boats, with higher speed journey out and back (e.g., some lobster, crayfish and tuna), and short trip coastal freighters.
- B** — For use in midwater trawlers, purse seiners, crew and supply boats, ferry boats with trips longer than one hour, and towboats in rivers where locks, sandbars, curves or traffic dictate frequent slowing.
- A** — For use with little load cycling in oceangoing displacement hulls such as freighters, tugboats and bottom-drag trawlers, and deep river towboats.

MARINE GEARS*

MARINE GEARS	RATIOS	DRY WEIGHT kg (lb)
MG514C	2.00:1, 3.50:1	454 (1000)
WAF 240	2.98:1, 3.90:1	400 (880)
WAF 242	2.96:1, 3.95:1	470 (1030)
WAF 260	5.04:1, 5.91:1	515 (1130)
WAF 262	5.05:1, 5.80:1	620 (1360)
WAF 340	2.96:1, 4.05:1	540 (1190)
WAF 360	4.92:1, 6.05:1	725 (1590)

*Transmission selection depends on input power, speed, ratio and vessel application. Contact your Caterpillar Dealer for assistance.



Shown with WAF 260 Transmission

DIMENSIONS

	B		D		L		H		W	
	mm	in	mm	in	mm	in	mm	in	mm	in
MG514C	237	9.3	632	24.9	2289	90.1	1314	51.7	1092	43.0
WAF 240	215	8.5	767	30.2	2357	92.8	1284	50.6	1092	43.0
WAF 242	215	8.5	767	30.2	2357	92.8	1284	50.6	1092	43.0
WAF 260	290	11.4	767	30.2	2357	92.8	1434	56.5	1092	43.0
WAF 262	315	12.4	767	30.2	2357	92.8	1489	58.6	1092	43.0
WAF 340	250	9.8	817	32.2	2407	94.8	1344	52.9	1092	43.0
WAF 360	345	13.6	837	33.0	2427	95.6	1554	61.2	1092	43.0

STANDARD EQUIPMENT

- Air Intake — single-stage, dry, air cleaner with service indicator
- Cooling — expansion tank, jacket water and sea water pumps, thermostats, lube oil and transmission oil cooler
- Exhaust — 6" dry flange, 6" dry elbow, watercooled exhaust manifold and turbocharger
- Flywheel and SAE No. 1 Housing
- Fuel — priming and transfer pumps, filter, flexible lines
- Governor, hydra-mechanical
- Instruments and Gauges — lubricating oil pressure, fuel pressure, and coolant temperature gauges, tachometer drive, service meter
- Lubricating — manual oil sump pump, oil filters

ACCESSORY EQUIPMENT

- Air Cleaner Adapter
- Control — remote-mounted pilot house controls, engine mounted controls
- Cooling — auxiliary pump, heat exchanger, dry charge conditioner
- Exhaust — muffler, watercooled elbow, rain cap, flexible fittings
- Fuel, primary filter
- Instruments and Gauges — engine-mounted premium panels, pilot house panels, tachometer and tachometer drive
- Power Takeoffs — auxiliary drive, front enclosed clutches, hydraulic pump drive
- Protection Devices — coolant temperature and oil pressure contactors, overspeed and solenoid shutoffs
- Starting — air, electric

RATING CONDITIONS

Ratings are based on SAE J1349 standard conditions of 100 kPa (29.61 in Hg) and 25°C (77°F). These ratings also apply at ISO 3046/1, DIN 6271 and BS 5514 standard conditions of 100 kPa (29.61 in Hg), 27°C (81°F) and 60% relative humidity.

Fuel Rates are based on fuel oil of 35° API [16°C (60°F)] gravity having an LHV of 42 780 kJ/kg (18,390 Btu/lb) when used at 29°C (85°F) and weighing 838.9 g/liter (7.001 lbs/U.S. gal).