

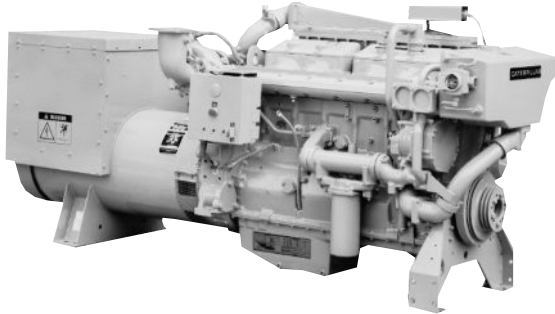


# Marine Generator Set

## 3406C

*Radiator Cooled*

*200 ekW (250 kVA) 50 Hz @ 1500 rpm*



Shown with  
Accessory Equipment;  
Radiator Not Shown

### SPECIFICATIONS

#### I-6, 4-Stroke-Cycle-Diesel

Emissions . . . . . IMO compliant  
 Displacement . . . . . 14.6 L (893 cu. in.)  
 Bore . . . . . 137 mm (5.4 in.)  
 Stroke . . . . . 165 mm (6.5 in.)  
 Aspiration . . . . . Turbocharged-Aftercooled  
 Governor . . . . . Hydra-mechanical or PSG  
 Engine Weight, Net Dry (approx) . . . . 1480 kg (3265 lb)  
 Capacity for Liquids  
   Cooling System (engine only) . . . 93 L (24.75 U.S. gal)  
   Lube Oil System (refill) . . . . . 34 L (9 U.S. gal)  
 Oil Change Interval . . . . . 250 hr  
   Caterpillar DEO 10W30 or 15W40  
 Rotation (from flywheel end) . . . . . Counterclockwise

### STANDARD EQUIPMENT

#### Air Inlet System

Corrosion resistant aftercooler core, regular duty panel type air cleaner

#### Cooling System

Engine mounted radiator, blower fan, fan drive, fan guard

#### Exhaust System

Watercooled manifold and turbocharger; dry elbow and flange, 152 mm (6 in.)

#### Flywheel and Flywheel Housing

SAE No. 1 (113 teeth)

#### Fuel System

LH fuel priming pump, fuel transfer pump, LH fuel filter, flexible fuel lines

#### Generator and Attachments

Brushless PM excited SR4 generator, VR3 voltage regulator, space heater

#### Instruments

RH instrument panel with oil pressure, water temperature, and fuel pressure gauges; service meter

#### Lube System

Crankcase breather, RH oil filter and oil level gauge, oil filler in valve cover

#### Mounting System

Rails, 85 mm (3.3 in.) height; linear vibration isolators between base and engine-generator

#### General

Vibration damper, Caterpillar yellow paint, lifting eyes

### ACCESSORY EQUIPMENT

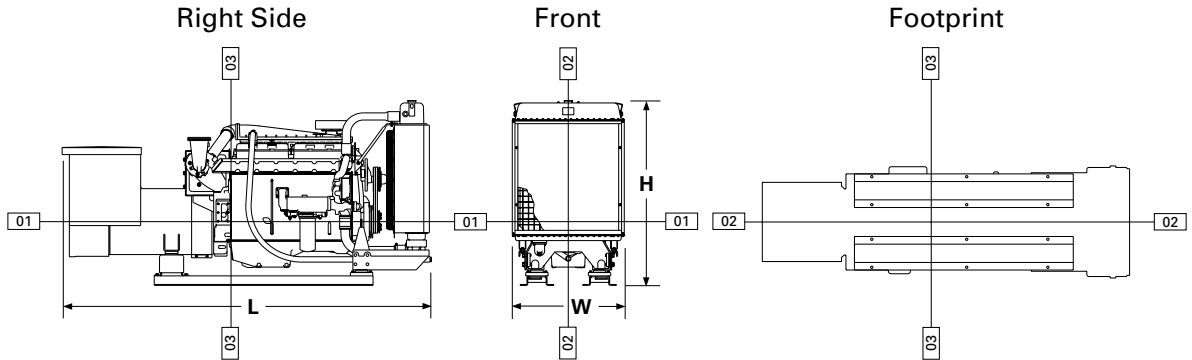
Air Starting Motor  
 Alarm Contactor — Oil Pressure, Water Temperature  
 24V 35 Amp, 60 Amp Alternator  
 Auxiliary Drive Pulley  
 Crankshaft Pulley  
 Deep Sump Pump Oil Pan  
 Digital Tachometer  
 Double Wall Fuel Lines and Drain  
 Duplex Fuel Filters  
 12V, 24V, 32V Electric Gauges  
 Electric Shutoffs — Oil Pressure, Water Temperature, Overspeed  
 24V Electric Starting Motor  
 Ether Starting Aid  
 Exhaust Elbow, Pipe, Flexible Fittings  
 Extension Terminal Box  
 24V Governor Control Motor and Switch  
 4-or 8-Hole Instrument Panel  
 Load Sharing or Speed Control Governor  
 Low Voltage Connections  
 Magnetic Pickup  
 Manual Voltage Control  
 Mechanical Shutoff — Oil Pressure, Water Temp.  
 Mechanical Tachometer Drive  
 Paralleling Kit  
 Primary Fuel Filter/Water Separator  
 RFI Filter  
 Solenoid Shutoff — 24V ETR, ETS  
 Spare Parts Kit  
 Terminal Strip Connections

### PERFORMANCE DATA

Turbocharged-Aftercooled

**DM6102-00**

200 ekW (.8 pf) 250 kVA			
% load	ekW	Lph	gph
100	215	59.2	15.6
75	161	44.9	11.9
50	108	31.3	8.3
25	54	18.7	4.9



**DIMENSIONS\***

	<b>mm</b>	<b>in.</b>				
<b>Overall Length</b>	3285.7	129.4				
Length from front to rear face of block	1774.5	69.9				
Length from rear face of block to back of generator	1511.2	59.5				
<b>Overall Height</b>	1653.8	65.1				
Height from crankshaft centerline to top of engine	1082.8	42.6				
Height from crankshaft centerline to bottom of rails	571.0	22.5				
<b>Overall Width</b>	1001.8	39.4				
Width from crankshaft centerline to port side	500.9	19.7				
Width from crankshaft centerline to starboard side	500.9	19.7				
			<b>Front</b>	<b>Center</b>	<b>Rear</b>	
	<b>mm</b>	<b>in.</b>	<b>mm</b>	<b>in.</b>	<b>mm</b>	<b>in.</b>
Customer mounting hole diameter	20.5	0.8	20.5	0.8	20.5	0.8
Width from crankshaft centerline to side	154.9	6.1	154.9	6.1	154.9	6.1
	404.9	15.9	404.9	15.9	404.9	15.9
Length from rear face of block to mounting holes	1043.1	41.1	317.1	12.5	531.9	20.9

\*Illustrations and dimensions from drawing: 180-6347.

**CATERPILLAR SR4 GENERATOR**

- Type . . . . . Brushless, revolving field, solid state self-excited
- Construction . . . . . Single bearing, close coupled
- Three-phase . . . . . 10 wire, wye
- Insulation . . . . . Class F with tropicalization and anti-abrasion
- Alignment . . . . . Pilot Shaft
- Voltage Regulator . . . . . Generator mounted, volts-per-hertz
- Voltage Regulation . . . . . ±1/2%
- Voltage Droop . . . . . Adjustable for parallel operation
- Voltage Gain . . . . . Adjustable
- Generator Weight, Net (approx).
  - 449 frame . . . . . 957 kg (2109 lb)
- Space Heater
- Voltages Available (adjustable +10%, -5%)
  - 50 Hz — 190-380 volts
- Meets or exceeds Marine Society requirements

**RATING CONDITIONS**

- Engine Performance Parameters**
- Power . . . . . ±3%
  - Specific Fuel Consumption . . . . . ±3%
  - Fuel Rate . . . . . ±5%
- Ratings** are based on SAE J1228/ISO8665 standard conditions of 100 kPa (29.61 in. Hg), 25°C (77°F), and 30% relative humidity. These ratings also apply at ISO3046/1, DIN6271/3, and BS5514 conditions of 100 kPa (29.61 in. Hg), 27°C (81°F), and 60% relative humidity.
- Fuel rates** are based on fuel oil of 35° API [16°C (60°F)] gravity having an LHV of 42 780 kJ/kg (18,390 Btu/lb) when used at 29°C (85°F) and weighing 838.9 g/L (7.001 lb/U.S. gal).
- Additional ratings may be available for specific customer requirements. Consult your Caterpillar representative for additional information.

Performance data is calculated in accordance with tolerances and conditions stated in this specification sheet and is only intended for purposes of comparison with other manufacturers' engines. Actual engine performance may vary according to the particular application of the engine and operating conditions beyond Caterpillar's control.

TMI Reference No.: DM6102-00 (6-15-01)

Materials and specifications are subject to change without notice.

The International System of Units (SI) is used in this publication.