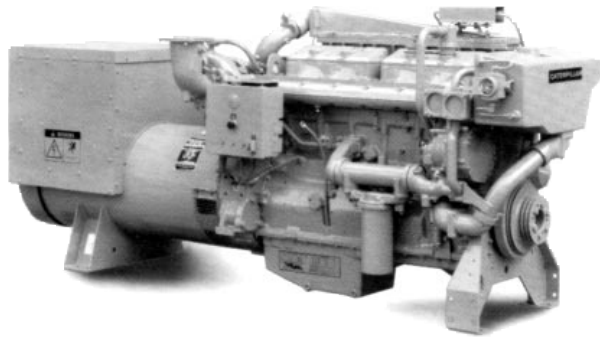




# Marine Generator Set

**3406C**  
 150 ekW 50Hz  
 190 ekW 60Hz



Shown with  
Optional Equipment

## CATERPILLAR® ENGINE SPECIFICATIONS

In-line 6, 4-Stroke-Cycle Diesel  
 Bore—mm (in) .....137 (5.4)  
 Stroke—mm (in) .....165 (6.5)  
 Displacement—L (cu in) .....14.6 (893)  
 Rotation (from flywheel end) ..Counterclockwise  
 Compression Ratio .....14.5:1  
 Capacity for Liquids — L (U.S. gal)  
 Cooling System  
   (engine and expansion tank) .....99.1 (26.2)  
 Lube Oil System (refill) .....34.1 (9.0)  
 Oil Change Interval .....250 hrs  
 Engine Weight, Net Dry (approx) — kg (lb)  
 Turbocharged-Aftercooled (TA)  
   heat exchanger cooling .....1470 (3240)  
   keel cooling .....1436 (3165)



## PERFORMANCE DATA

Jacket Water Aftercooled

60 Hz, 1200 rpm

50 Hz, 1000 rpm

	190 ekW (.8 pf), 237 kV•A				150 ekW (.8 pf), 187 kV•A			
% Load	100	75	50	25	100	75	50	25
ekW	190	142	95	47	120	112	75	37
L/hr	53.4	40.5	28.4	15.7	44.4	33.3	22.6	13.2
gph	14.1	10.7	7.5	4.1	11.7	8.8	6.0	3.5

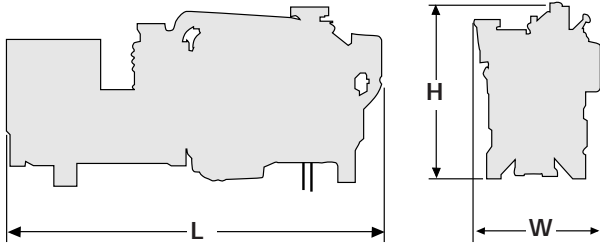
## CATERPILLAR® SR4 GENERATOR

Type .....brushless, revolving field, permanent magnet excited  
 Construction .....single bearing, close coupled  
 Three phase .....Wye connected, 10 wire  
 Insulation ..... Class F with tropicalization and anti-abrasion  
 Alignment ..... pilot shaft  
 Voltage regulator .....generator mounted, Volts per Hertz  
 Voltage regulation .....± 1/2 %

Voltage droop .....adjustable for parallel operation  
 Voltage gain .....adjustable  
 Generator weight, net (approx)  
   kg (lb) .....1293 (2850)  
 Voltages available (adjustable +10%, -5%)  
   50 Hz — 190-380 Volts  
   60 Hz — 220-440 Volts  
 Space heater

Note: Caterpillar Marine Engines and Generators are approved by Marine Classification Societies. Consult your Caterpillar dealer for specific ratings and approvals.

## DIMENSIONS



L		H		W	
mm	in	mm	in	mm	in
2800	110	1335	52.5	1000	39.4

## STANDARD EQUIPMENT

- Air intake
  - single-stage dry air cleaner with service indicator
- Cooling
  - lube oil cooler, auxiliary sea water pump, jacket water pump, expansion tank, thermostats and housing
- Exhaust
  - elbow, flange, watercooled exhaust manifold, watercooled turbocharger
- Flywheel and flywheel housing
  - SAE No. 1
- Fuel system
  - priming and transfer pumps, filter, flexible lines
- Governor
  - hydramechanical
- Instruments and gauges
  - left side panel with fuel pressure, lube oil pressure, water temperature gauges; service meter
- Lubricating system
  - filler, filter, dipstick
- Mounting
  - lifting eyes, supports
- Torsional vibration damper

## OPTIONAL EQUIPMENT

- Air intake
  - air cleaner adapter
- Controls
  - PSG Woodward governor
- Cooling
  - dry charge conditioner, heat exchanger, auxiliary pump
- Exhaust
  - flexible fitting, elbow, pipe, rain cap, muffler
- Fuel
  - primary filter, double wall lines
- Instruments and gauges
  - electric oil pressure and water temperature gauges, tachometer and drive, premium panel, ammeter, right standard instrument panel
- Lubricating
  - filter
- Power takeoffs
  - auxiliary drive, hydraulic pump drive, front enclosed clutch, front stub shaft, hydraulic pump drive adapter, pulley
- Protection devices
  - alarm switches, electric shutoffs, mechanical shutoffs
- Starting
  - air, electric, battery sets-rack-chargers, alternator

## RATING DEFINITION AND CONDITIONS

**Ratings** are based on SAE J3046 and J1349 standard conditions of 100 kPa (29.61 in Hg) and 25° C (77° F). These ratings also apply at ISO3046/1, DIN6271 and BS5514 standard conditions of 100 kPa (29.61 in Hg), 27°C (81° F) and 60% relative humidity.

**Fuel rates** are based on fuel oil of 35° API [16° C (60° F)] gravity having an LHV of 42 780 kJ/kg (18 390 Btu/lb) when used at 29° C (85° F) and weighing 838.9 g/liter (7.001 lb/U.S. gal).

Additional ratings may be available for specific customer requirements. Consult your Caterpillar representative for details.